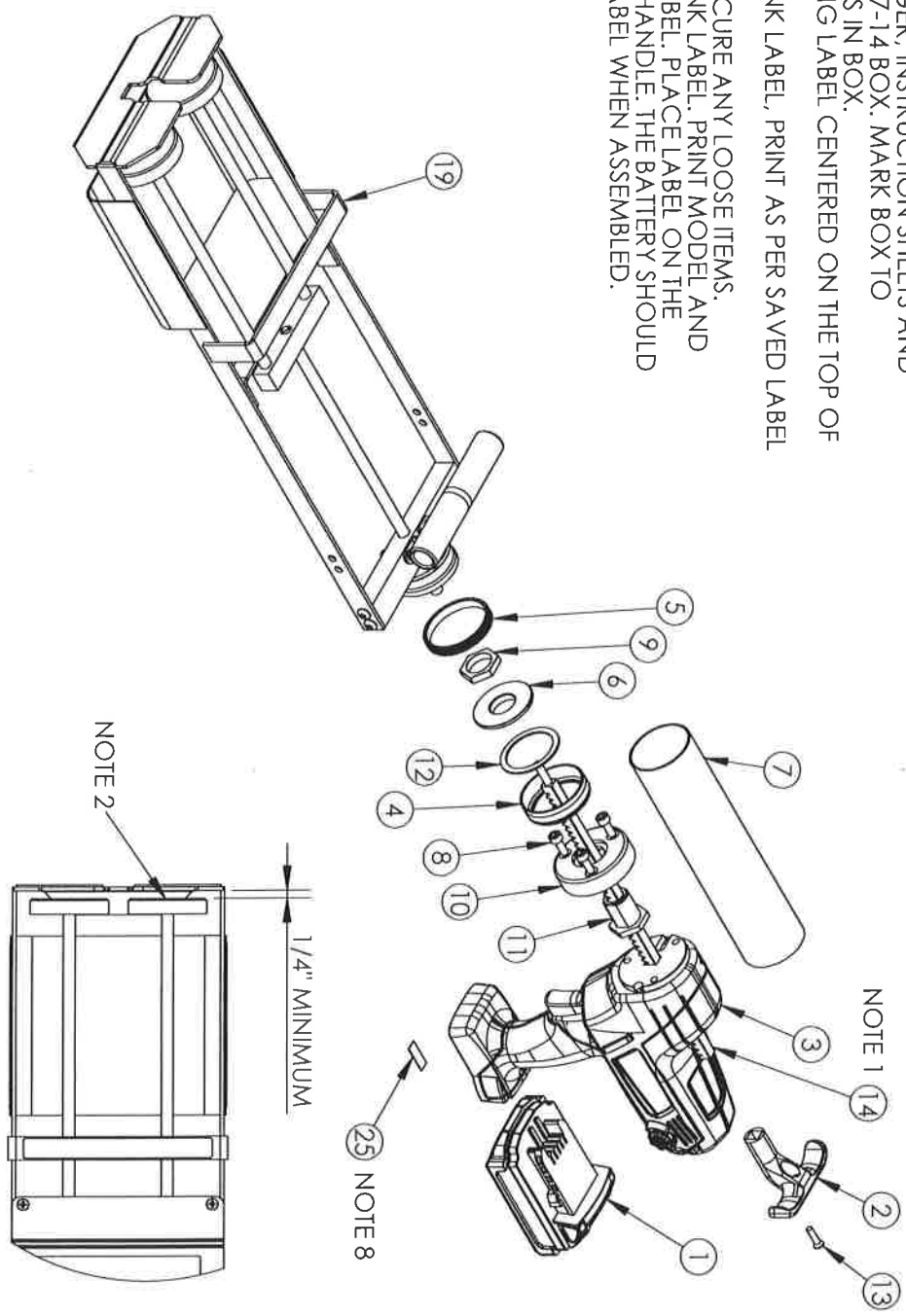


REVISIONS		DATE	APPROVED
CN	REV.		
CN1378	1	ADD 500-726 AND NOTE 8	4/29/14

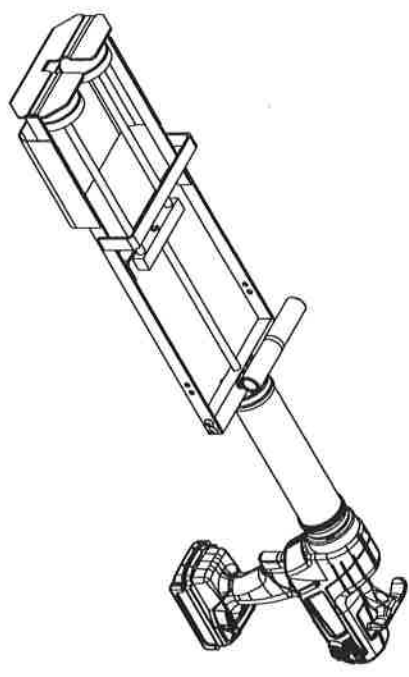
- NOTE:
- BEFORE ASSEMBLING PULL, TEST MAGNET STOP ON RACK.
 - EJECTORS MUST BE A MINIMUM OF 1/4" AWAY FROM FRONT PLATE WHEN RACK STOPS AT MAGNET.
 - ROTATE HANDLE 90° TO BOX.
 - PLACE BATTERY, CHARGER, INSTRUCTION SHEETS AND ALL LITERATURE INTO 357-14 BOX. MARK BOX TO IDENTIFY COMPONENTS IN BOX.
 - PLACE 500-632 WARNING LABEL CENTERED ON THE TOP OF MASTER BOX.
 - LABEL 500-519 IS A BLANK LABEL, PRINT AS PER SAVED LABEL FILE "E18T1500XL".
 - USE KRAFT PAPER TO SECURE ANY LOOSE ITEMS.
 - LABEL 500-726 IS A BLANK LABEL, PRINT MODEL AND BATCH NUMBER ON LABEL. PLACE LABEL ON THE BOTTOM SURFACE OF HANDLE. THE BATTERY SHOULD NOT INTERFERE WITH LABEL WHEN ASSEMBLED.



PROPRIETARY AND CONFIDENTIAL		MATERIAL		DATE		11/18/13		DIMENSIONAL TOLERANCES UNLESS OTHERWISE SPECIFIED		SCALE: 1:6		SITE A	
THE INFORMATION CONTAINED IN THIS DRAWING IS THE SOLE PROPERTY OF ALBION ENGINEERING CO. ANY REPRODUCTION IN PART OR AS A WHOLE WITHOUT THE WRITTEN PERMISSION OF ALBION ENGINEERING CO. IS PROHIBITED.		ALBION 447 MATERIAL SPEC.		DRAWN		BJM		FRAC. ±1/64" ANG. ±30° DEC. ±.005"		GUN, TWIN, CORDLESS 18V, 750/750ML E18T1500XL		DWG. NO. 990-11	
		FINISH		ORIGIN		DS629		APPROVED		REV. 1		SHEET 1 OF 3	
		SEE INDIVIDUAL COMPONENT DRAWINGS						Albion Engineering Co. 1250 N. Church St. Moorestown, NJ 08057					

REVISIONS		DATE	APPROVED
CN137B	1	4/29/14	

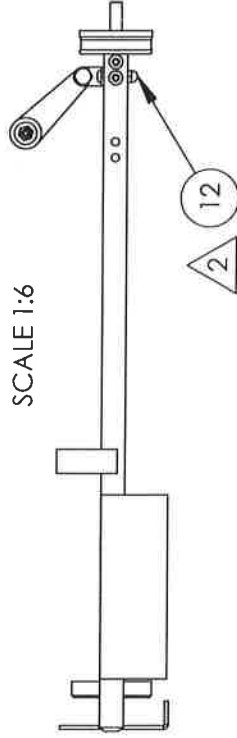
ITEM NO.	PART NUMBER	DESCRIPTION	QTY.
1	982-2	BATTERY	1
2	145-15	PULL	1
3	982-1	HANDLE	1
4	2-26	BACK CAP	1
5	3-5	LOCK RING	1
6	865-8	BARREL ADAPTER	1
7	237-17	BARREL	1
8	982-9	SCREW	3
9	982-8	BARREL ADAPTER NUT	1
10	982-7	BARREL SCREW HOLDER	1
11	982-6	BARREL ADAPTER SCREW	1
12	31-21	GASKET	1
13	10-77	SCREW	1
14	993-3	RACK	1
15	500-519	LABEL	1
16	982-10	INSTRUCTIONS, CHARGER	1
17	982-11	INSTRUCTIONS, BATTERY	1
18	982-12	INSTRUCTIONS, GUN	1
19	882-15	CARRIAGE ASSY	1
20	982-3	18V CHARGER	1
21	500-632	WARNING LABEL	1
22	357-14	BOX, GUN	1
23	357-59	BOX, GUN	1
24	357-64	BOX, GUN	1
25	500-726	LABEL	1



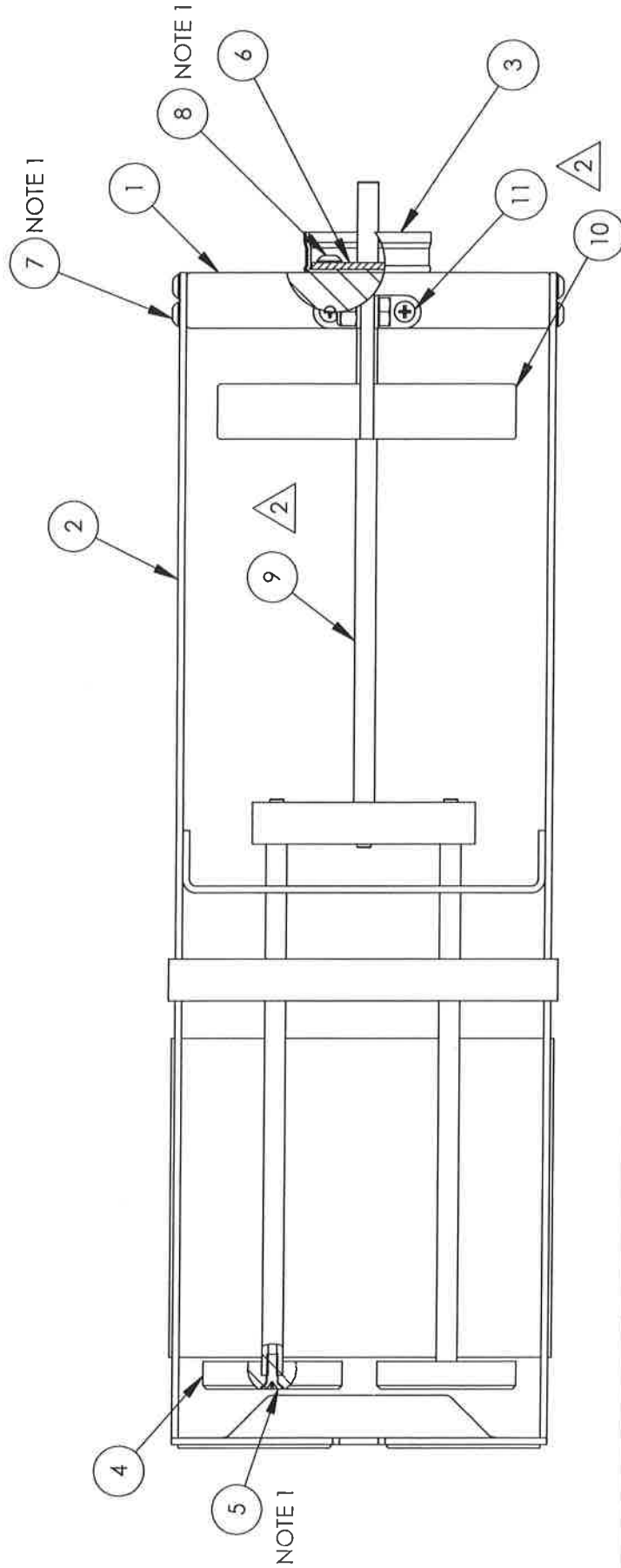
PROPRIETARY AND CONFIDENTIAL		MATERIAL		DATE		11/18/13		DIMENSIONAL TOLERANCES		SIZE		A	
THE INFORMATION CONTAINED IN THIS DRAWING IS THE SOLE PROPERTY OF ALBION ENGINEERING CO. ANY REPRODUCTION IN PART OR AS A WHOLE WITHOUT THE WRITTEN PERMISSION OF ALBION ENGINEERING CO. IS PROHIBITED.		ALBION 447 MATERIAL SPEC.		DRAWN		BJM		UNLESS OTHERWISE SPECIFIED FRAC. ±1/64" ANG. ±30° DEC. ±.005"		SCALE: 1:9		GUN, TWIN, CORDLESS 18V, 750/750ML E18T1500XL	
		FINISH		APPRVD		<i>[Signature]</i>		ORIGIN		DS629		DWG. NO.	
												990-11	
												REV. 1	
												SHEET 2 OF 3	
												Albion Engineering Co. 1250 N. Church St. Moorestown, NJ 08057	

ITEM NO.	QTY.	PART NO.	DESCRIPTION	CN	REV.	REVISIONS	DATE	APPROVED
1	1	827-H21	CARRIAGE SUPPORT	CN1163	1	ITEM 8, 8 IS-G02 WAS 815-2, ITEM 9, 10-88 WAS 533-3	10/18/06	
2	1	895-G03	CARRIAGE ASSY					
3	1	421-H12	FRONT CAP	CN1340	2	DELETE (1)815-G02, (2)10-88, (2)827-H12, (1)721-2, (4)10-85, (4)87-36, (2)366-46, (1)366-47, (3)10-81 & (1)507-18 - ADD (1)957-21, (2)10-119, (1)537-G16 & (2)37-40	9/5/13	
4	2	29-H52	EJECTOR					
5	2	10-82	SCREW					
6	1	4-19	COUPLING PLATE					
7	4	10-85	SCREW					
8	2	10-86	SCREW					
9	1	537-G16	ROD ASSEMBLY					
10	1	957-21	UPPER HANDLE ASSEMBLY					
11	2	10-119	SCREW					
12	2	37-40	CROWN NUT					

NOTE:
1. USE LOCTITE ON THESE THREADS.



SCALE 1:6



PROPRIETARY AND CONFIDENTIAL THE INFORMATION CONTAINED IN THIS DRAWING IS THE SOLE PROPERTY OF ALBION ENGINEERING CO. ANY REPRODUCTION IN PART OR AS A WHOLE WITHOUT THE WRITTEN PERMISSION OF ALBION ENGINEERING CO. IS PROHIBITED.	MATERIAL	DATE	SIZE	DIMENSIONAL TOLERANCES UNLESS OTHERWISE SPECIFIED FRAC.: ±1/64" ANG.: ±30° DEC.: ±.005"	
	ALBION 447 MATERIAL SPEC.	3/21/05	A	SCALE: 1:3	
FINISH	DATE	DRAWN	CARRIAGE ASSEMBLY FOR B26T1500XL		
SEE INDIVIDUAL COMPONENT DRAWINGS	3/21/05	BJM	DWG. NO. 882-15		
	APPR'D	ORIGIN	REV. 2		
	DS313		SHEET 1 OF 1		

Albion Dispensing Solutions
 Albion Engineering Co.
 1250 N. Church St.
 Moorestown, NJ 08057